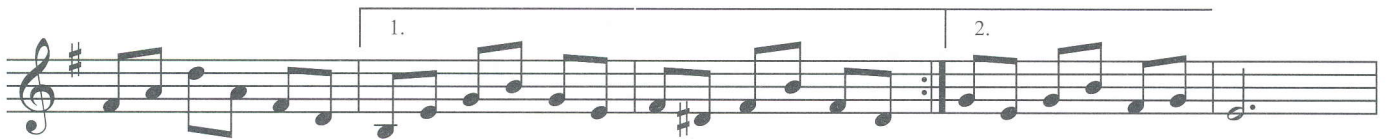


LES 28

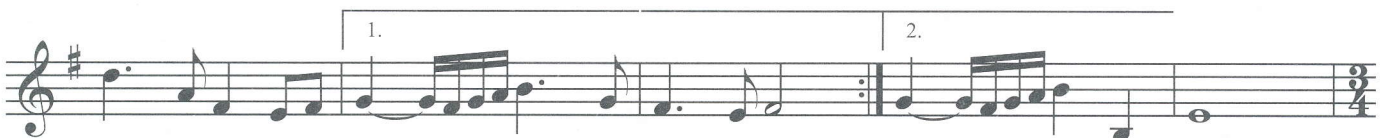
A)

CD N° 37

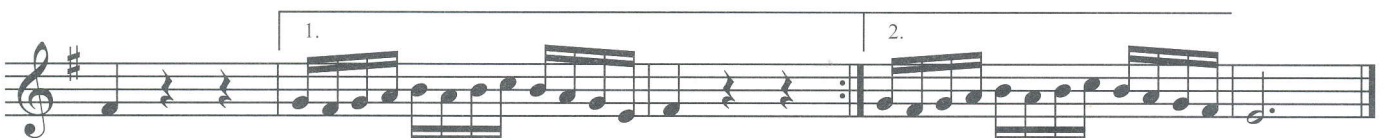
Variaties op 'Folie d'Espagne'



Adagio



FINALE Allegro



B)

Sarabande uit de suite in d van G.F. Haendel (1685-1759)

The main musical score for the Sarabande in D minor by G.F. Haendel, measures 1 through 12. It is written in 3/4 time and D minor. The notation consists of three staves of music. The first staff begins with a treble clef, a key signature of two flats (B-flat and E-flat), and a 3/4 time signature. The music features a characteristic sarabande rhythm with a slow, graceful feel. The second and third staves continue the melodic line, with the third staff ending with a double bar line and repeat dots.

var.1 : enkel vrouwenstemmen

Musical score for variation 1, labeled 'var.1 : enkel vrouwenstemmen'. It consists of three staves of music in the same key and time signature as the main score. The first staff begins with a treble clef and a repeat sign. The melody is similar to the main score but includes some chromatic alterations, such as a sharp sign on the second staff. The third staff concludes with a double bar line and repeat dots.

var.2 : enkel mannenstemmen

Musical score for variation 2, labeled 'var.2 : enkel mannenstemmen'. It consists of four staves of music in the same key and time signature. The first staff begins with a bass clef and a repeat sign. The melody is more rhythmic and active than the main score, featuring many eighth and sixteenth notes. The fourth staff concludes with a double bar line and repeat dots.

LES 29

A)

Moderato

Musical score for section A, Moderato, 3/4 time signature. The score consists of seven staves. The first four staves are treble clef, and the last three are bass clef. The key signature has three sharps (F#, C#, G#). The first staff begins with a piano (*p*) dynamic. The second staff contains a triplet of eighth notes. The fifth staff contains another triplet of eighth notes. The sixth staff begins with a mezzo-forte (*mf*) dynamic. The seventh staff ends with a *subito p* marking.

B)

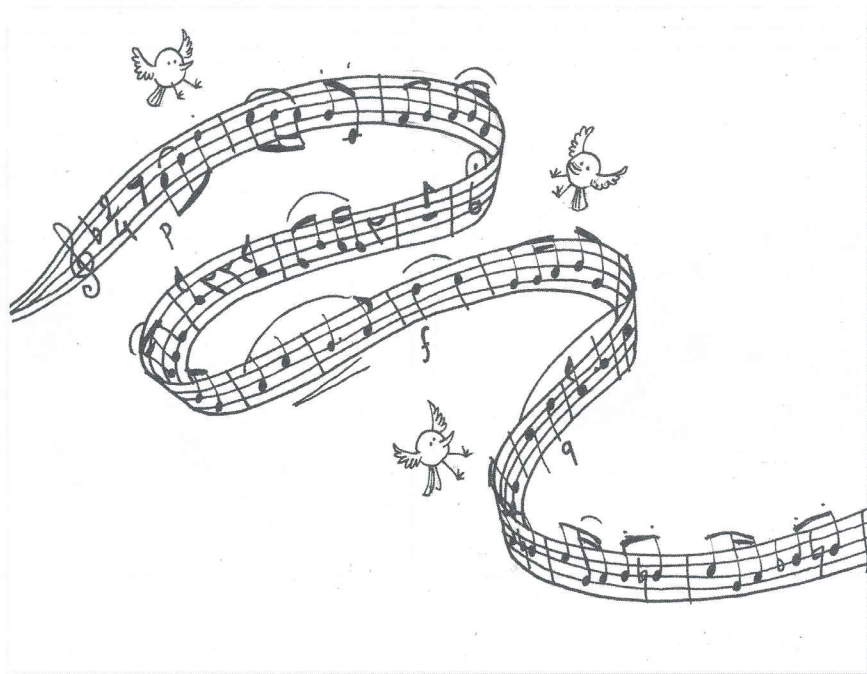
Moderato

Musical score for section B, Moderato, common time signature. The score consists of seven staves. The first four staves are treble clef, and the last three are bass clef. The key signature has one sharp (F#). The first staff begins with a mezzo-piano (*mp*) dynamic. The third staff begins with a mezzo-forte (*mf*) dynamic. The fifth staff begins with a forte (*f*) dynamic. The sixth staff ends with a *rit.* marking.

C)

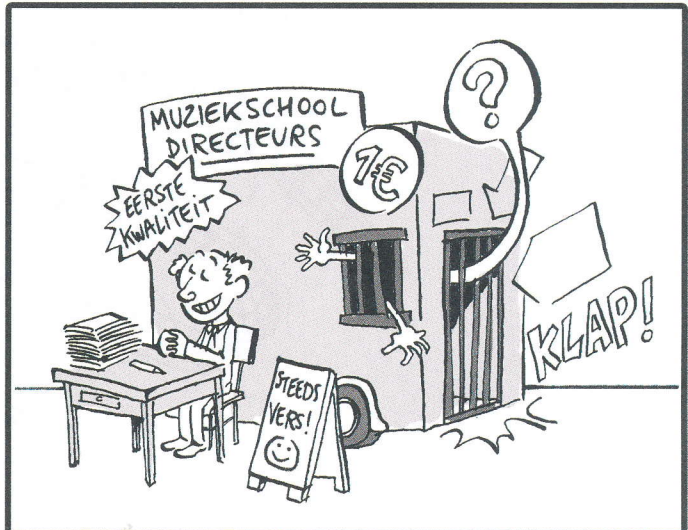
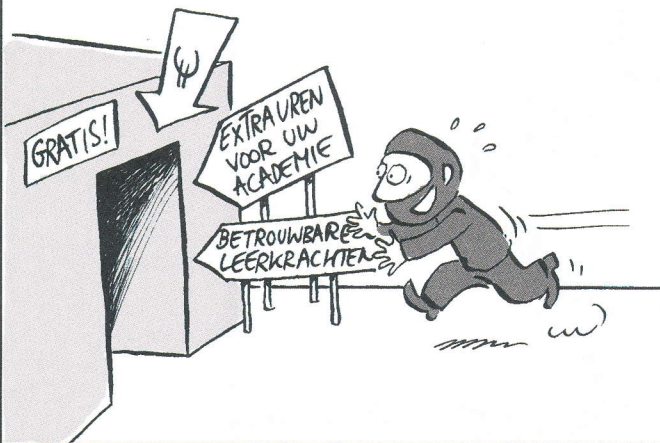
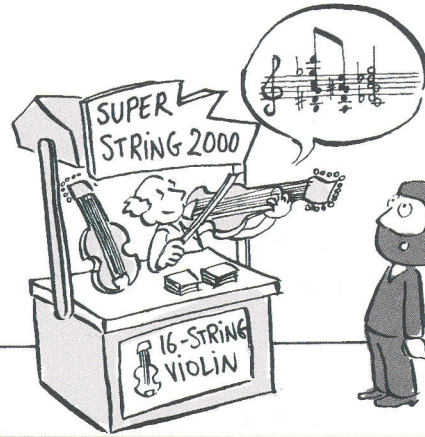
CD N° 38

Seven staves of musical notation in 4/4 time. The first six staves show a melodic line in the treble clef, and the seventh staff shows a bass line in the bass clef. The music is in a key with two flats (B-flat and E-flat) and consists of a series of eighth and sixteenth notes, with some rests and dynamic markings.



Os

MUZIEK
BEURS



-JackE-