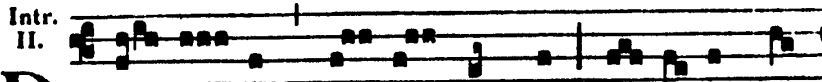


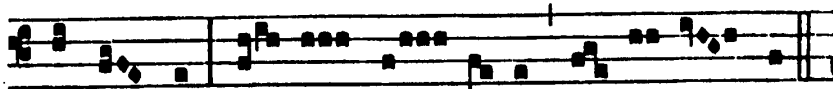
IN NATIVITATE DOMINI

AD PRIMAM MISSAM.

In Nocte.



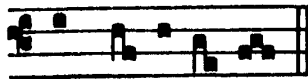
D ó-mi-nus * di-xit ad me : Fi-li-us me-



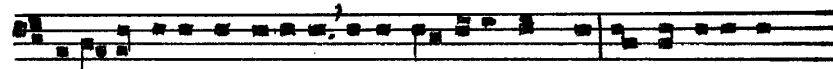
us es tu, e-go hó-di-e gé-nu-i te.



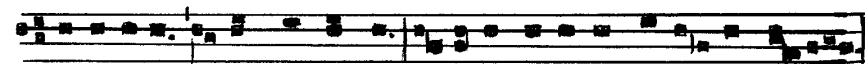
Ps. Qua-re fremu-é-runt gentes : * et pópu-li me-di-tá-ti



sunt in-á-ni-a ?



Glo-ri-a Pa-tri, et Fi-li-o, et Spi-ri-tu-i Sanc-to. Si-cut erat in



Prin-ci-pi-o, et nunc, et semper, et in saecu-la sae-cu-lo-rum, Amen.