

LES 2

A)



B)



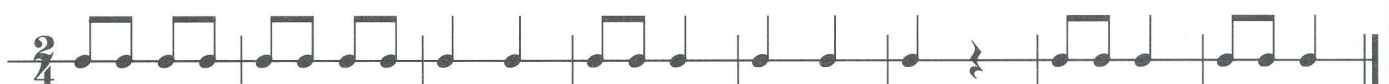
C)



D)



E)

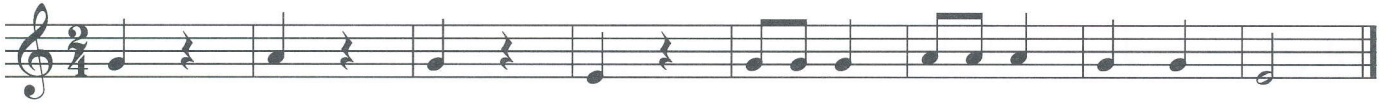


F)



LES 5

A)



B)



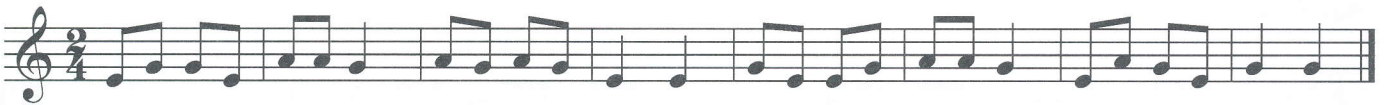
C)

 CD N° 8



D)

 CD N° 9



E)



F)

 CD N° 10



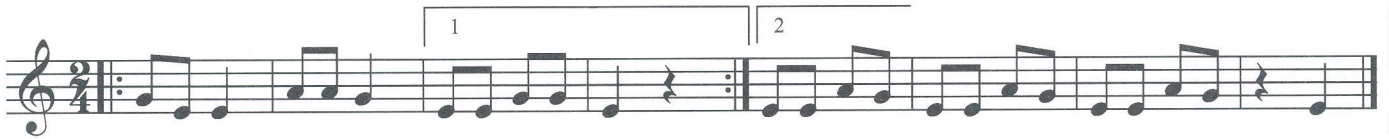
LES 6

A)



B)

CD N° 11

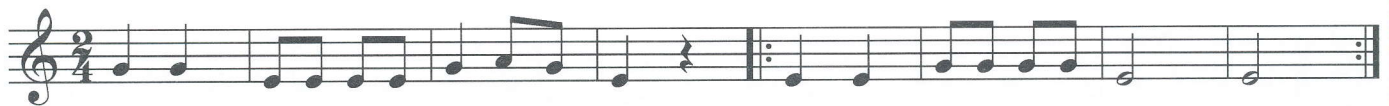


C)



D)

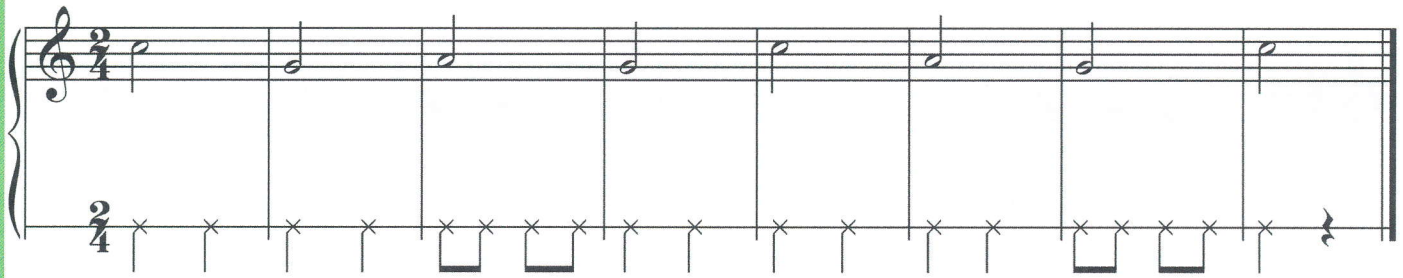
CD N° 12



LES 7

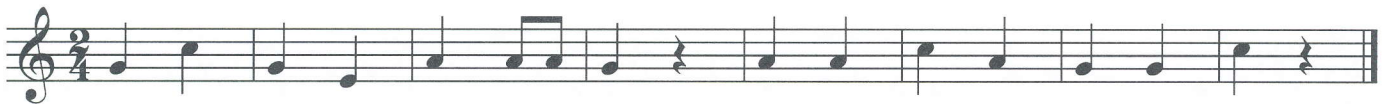
A)

 CD N° 13



Musical notation for exercise A, consisting of a treble clef staff and a bass clef staff. The time signature is 2/4. The treble staff contains a sequence of notes: G4, A4, B4, C5, B4, A4, G4, F4, E4, D4, C4. The bass staff contains a sequence of notes: G2, A2, B2, C3, B2, A2, G2, F2, E2, D2, C2.

B)



Musical notation for exercise B, consisting of a single treble clef staff. The time signature is 2/4. The notes are: G4, A4, B4, C5, B4, A4, G4, F4, E4, D4, C4.

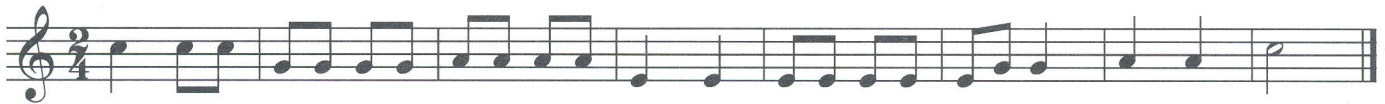
C)

 CD N° 14



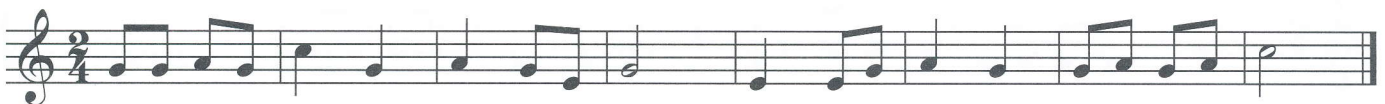
Musical notation for exercise C, consisting of a single treble clef staff. The time signature is 2/4. The notes are: G4, A4, B4, C5, B4, A4, G4, F4, E4, D4, C4.

D)



Musical notation for exercise D, consisting of a single treble clef staff. The time signature is 2/4. The notes are: G4, A4, B4, C5, B4, A4, G4, F4, E4, D4, C4.

E)



Musical notation for exercise E, consisting of a single treble clef staff. The time signature is 2/4. The notes are: G4, A4, B4, C5, B4, A4, G4, F4, E4, D4, C4.

F)

 CD N° 15



Musical notation for exercise F, consisting of a single treble clef staff. The time signature is 2/4. The notes are: G4, A4, B4, C5, B4, A4, G4, F4, E4, D4, C4.

G)



Musical notation for exercise G, consisting of a treble clef staff and a bass clef staff. The time signature is 2/4. The treble staff contains notes: G4, A4, B4, C5, B4, A4, G4, F4, E4, D4, C4. The bass staff contains notes: G2, A2, B2, C3, B2, A2, G2, F2, E2, D2, C2.

LES 8

A)

Two staves of music in 2/4 time. The first staff begins with a forte (*f*) dynamic and a piano (*p*) dynamic. The second staff also begins with *f* and *p* dynamics.

B)

Two staves of music in 2/4 time. The first staff begins with a forte (*f*) dynamic and a piano (*p*) dynamic. The second staff also begins with *f* and *p* dynamics.

C)

woodblock/claves (tutti)

Two staves of music in 2/4 time. The first staff is for woodblock/claves (tutti) with a piano (*p*) dynamic. The second staff is for handtrom (solo) with a forte (*f*) dynamic.

D)

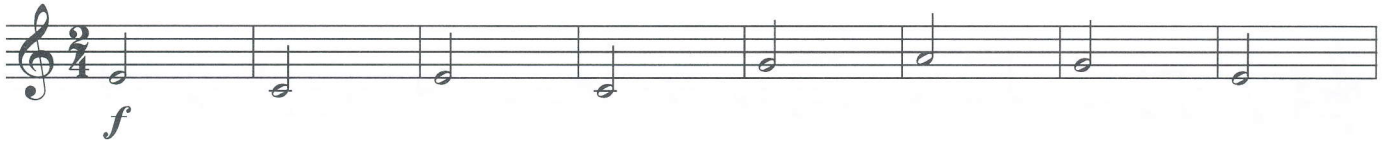
 CD N° 16

One staff of music in 2/4 time starting with a piano (*p*) dynamic.

LES 9

A)

 CD N° 17



B)

 CD N° 18



C)

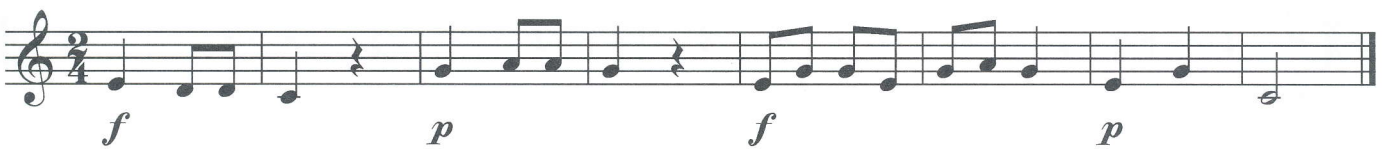


D)



E)

 CD N° 19



F)

 CD N° 20



G)

LES 10

A)

2de x *f*

B)

CD n° 21

C)

CD n° 22

f

p

D)

f p f p f

E)

Andante