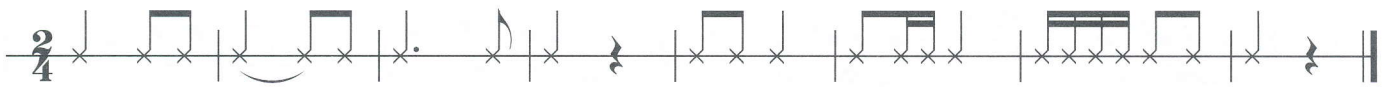
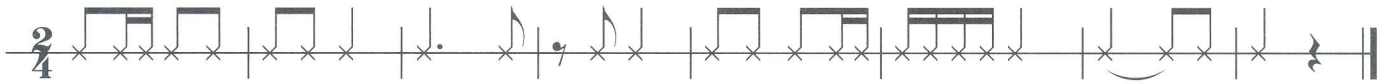


LES 31

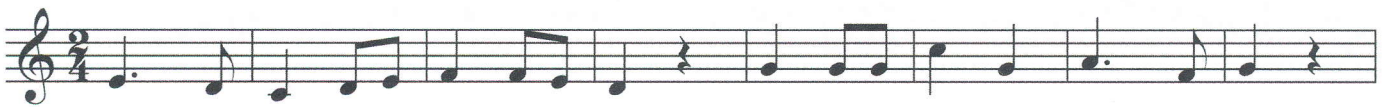
A)



B)

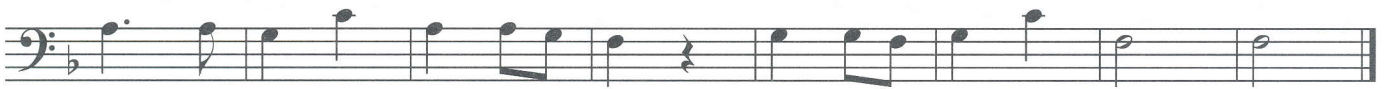
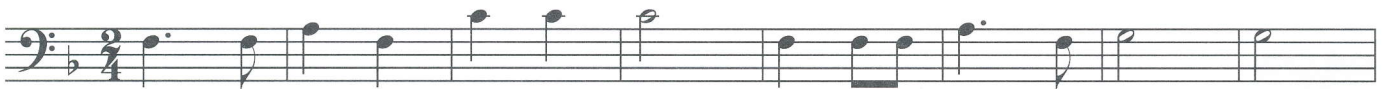


C)



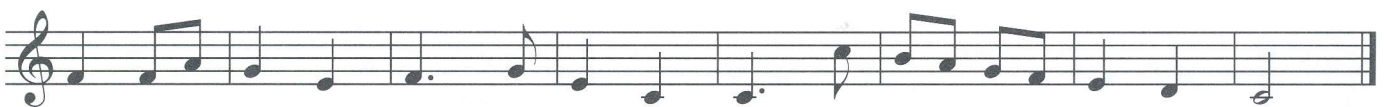
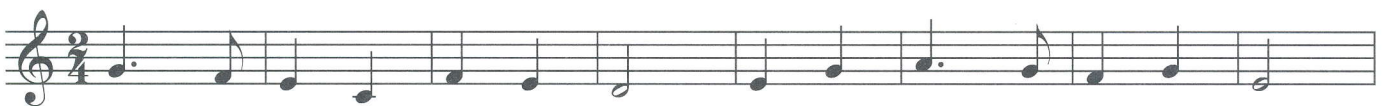
D)

 CD N° 63



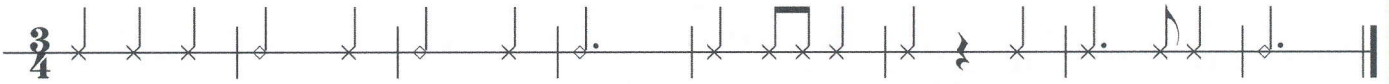
E)

 CD N° 64

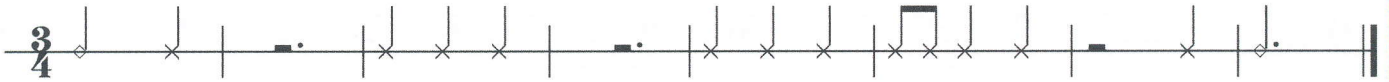


LES 32

A)

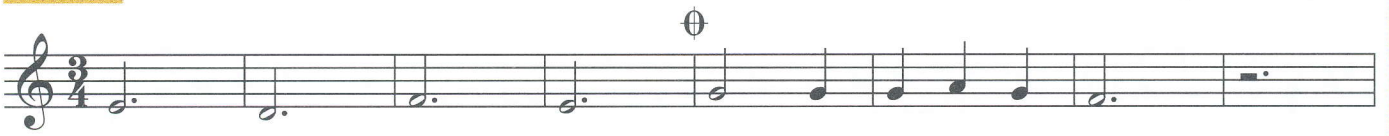


B)



C)

CD N° 65



D.C. al Coda

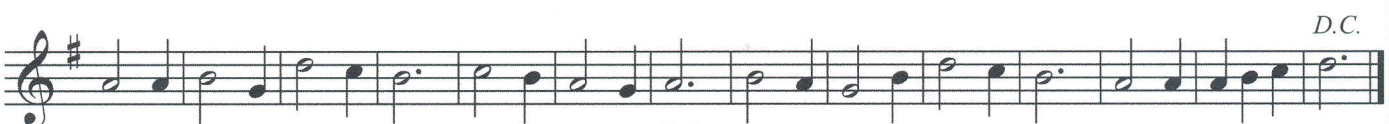


D)

CD N° 66



E)



LES 34

A)



B)

C)

CD N° 69

D)

CD N° 70

LES 35

A)

Four staves of rhythmic exercises in 6/8 time. Each staff begins with a treble clef and a 6/8 time signature. The exercises involve various rhythmic patterns including eighth and sixteenth notes, rests, and beams, often marked with 'x' to indicate specific notes or rests.

B)

 CD n° 71

Musical notation for exercise B, a single staff in 6/8 time with a treble clef. It features a melodic line with eighth and sixteenth notes, including first and second endings.

C)

 CD n° 72

Two staves of musical notation for exercise C in 6/8 time with a treble clef. The first staff contains a melodic line with eighth and sixteenth notes, and the second staff contains a corresponding bass line.


D)

Two staves of musical notation for exercise D in 6/8 time with a treble clef and a key signature of one sharp (F#). The first staff contains a melodic line with eighth and sixteenth notes, and the second staff contains a corresponding bass line.

LES 36

A)

 CD N° 73



Exercise A consists of two staves of music in 3/4 time. The first staff begins with a treble clef, a key signature of one flat (B-flat), and a 3/4 time signature. The melody is composed of quarter and eighth notes, ending with a half note. The second staff continues the melody with similar rhythmic patterns, also ending with a half note.

B)



Exercise B consists of two staves of music in 6/8 time. The first staff begins with a treble clef, a key signature of one flat (B-flat), and a 6/8 time signature. The melody features a mix of quarter, eighth, and sixteenth notes, with some rests. The second staff continues the melody with similar rhythmic patterns, ending with a quarter note.

C)

 CD N° 74



Exercise C consists of two staves of music in 2/4 time. The first staff begins with a treble clef, a key signature of one sharp (F#), and a 2/4 time signature. The melody is composed of quarter and eighth notes, with some sixteenth-note runs. The second staff continues the melody with similar rhythmic patterns, ending with a quarter note.

D)



Exercise D consists of two staves of music in 2/4 time. The first staff begins with a treble clef, a key signature of one flat (B-flat), and a 2/4 time signature. The melody features a mix of quarter, eighth, and sixteenth notes, with some rests. The second staff continues the melody with similar rhythmic patterns, ending with a quarter note. The word "Fine" is written above the end of the first staff, and "D.C." is written above the end of the second staff.

LES 37

A1)

Two staves of musical notation in 6/8 time. The first staff contains four measures of rhythmic patterns with 'x' marks indicating fingerings. The second staff contains four measures of similar rhythmic patterns, also with 'x' marks.

A2)

Two staves of musical notation in 6/8 time. The first staff contains four measures of rhythmic patterns with 'x' marks. The second staff contains four measures of similar rhythmic patterns with 'x' marks.

B)

 CD n° 75

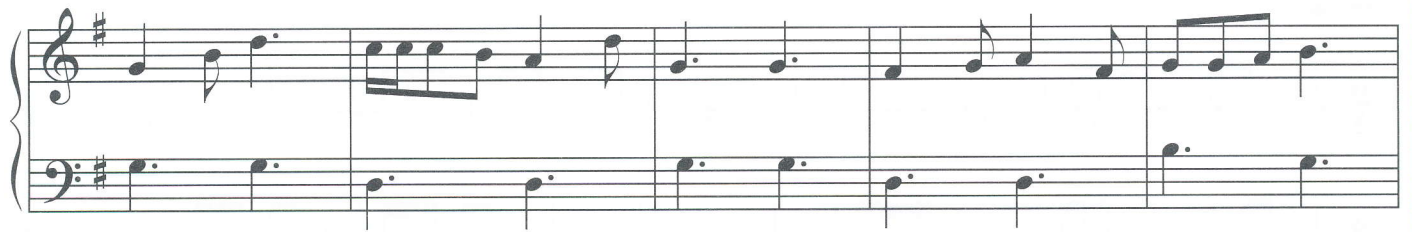
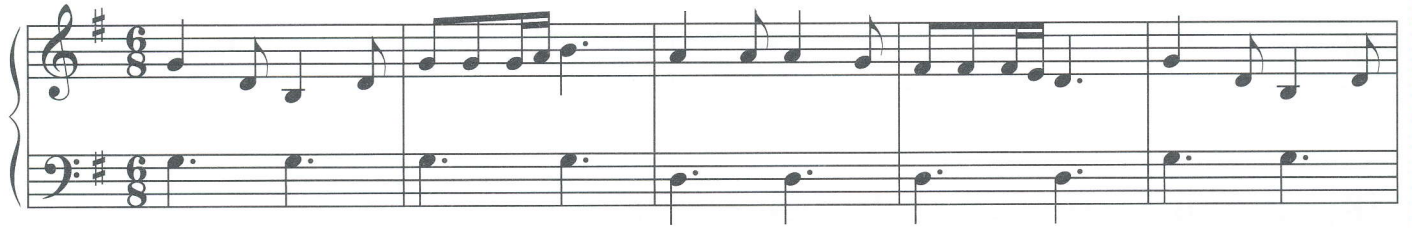
Three staves of musical notation in 6/8 time. The first staff is a single melodic line. The second staff begins with the word "Fine" above the first measure. The third staff ends with the word "D.C." above the final measure.

C)

 CD n° 76

Two staves of musical notation in 6/8 time. Both staves contain melodic lines with various note values and rests.

D)



LES 38

A)

leesoefening

B)

C)

 CD n° 77

D)

Largo

E)

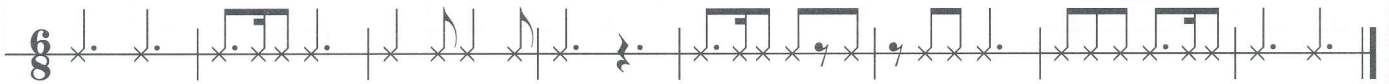
 CD n° 78

LES 39

A1)

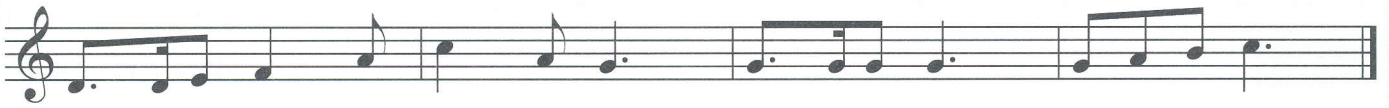
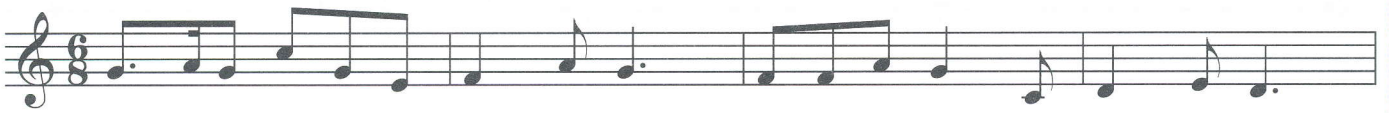


A2)

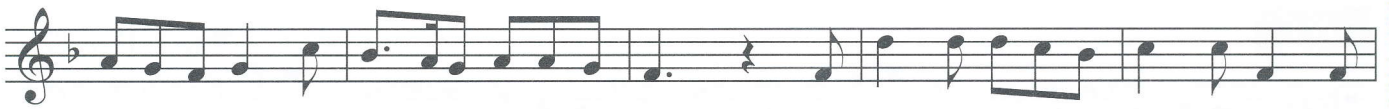


B)

 CD n° 79



C)



D)

 CD n° 80



